

**TransKarachi**  
**Karachi Bus Rapid Transit Red Line Project**  
**RFR for Balance Civil & MEP Works of TransKarachi Corporate Office**

**BILL OF QUANTITIES**

**MAIN SUMMARY OF BALANCE WORKS**

<b>S.#</b>	<b>DESCRIPTION</b>	<b>AMOUNT</b>
1	TOTAL COST OF CIVIL WORKS	
2	TOTAL COST OF MEP WORKS	
<b>OVERALL COST OF BALANCE WORKS OF TK OFFICE:</b>		

**TransKarachi**  
**Karachi Bus Rapid Transit Red Line Project**  
**RFR for Balance Civil & MEP Works of TransKarachi Corporate Office**

**BILL OF QUANTITIES**  
**SUMMARY - CIVIL WORKS**

<b>S.#</b>	<b>DESCRIPTION</b>	<b>AMOUNT</b>
1	BALANCE CIVIL WORK	-
2	ADDITIONAL CIVIL WORK	-
	<b>TOTLA COST OF CIVIL WORKS:</b>	<b>-</b>

**TransKarachi**  
**Karachi Bus Rapid Transit Red Line Project**  
**RFR for Balance Civil & MEP Works of TransKarachi Corporate Office**

**BILL OF QUANTITIES (BALANCE CIVIL WORKS)**

S.#	Description	Unit	Qty	Rate	Amount
<b>BALANCE CIVIL WORK AT ROOF TOP FLOOR</b>					
<b>A</b>	<b>WALL FINISHES</b>				
<b>1</b>	<b>BLOCK MASONRY</b>				
	Block Masonry with providing and laying of machine made CC Blocks of 1000 psi cubic strength, setting in 1:4 cement sand mortar, raked joints including curing, scaffolding, reinforcing & anchors from RCC columns ( if required ) & grouting with cement sand mortar), hacking of existing surface for bonding where necessary, wastage, etc., complete in all respects as per specifications and drawings.				
i	4" thick	SFT	214		-
ii	6" thick	SFT	197		-
<b>2</b>	<b>Internal Plaster</b>				
	Providing and applying 1/2 inch thick cement sand plaster 1:4 on internal wall & slab of minimum thickness as specified including G.I. corner beads / plaster stops (all horizontal and vertical exposed corner edges up to 8' height from FFL), 1' wide galvanized metal lathe of 18 SWG at the junctions of concrete and block masonry, conduit chases, etc., fixed with masonry nails and washer, rounded edges where required, grooves where required, smooth finished in line, level, plumb, curing, scaffolding, hacking / chipping of existing surface for bonding where necessary, etc., complete in all respects as per specifications and drawings.(For Payment exposed area will be measured).	SFT	1,262		-
<b>3</b>	<b>External Plaster</b>				
	Same as item # 2 above but with 3/4" thickness for external plaster	Sft	279		-
<b>4</b>	<b>Plastic Emulsion Paint.</b>				
	Providing and applying three coats of Plastic Emulsion paint of approved quality and shade (Berger, ICI or equivalent) on walls & other surfaces over one coat of primer and base preparation upto any height and level including preparing the surfaces smooth by putty filling, scraping with sand paper, cleaning the surface et., complete as per drawings, specifications and as directed by the Engineer incharge.	Sft	2,482		-
<b>5</b>	<b>Weathershield Paint</b>				
	Same as item # 4 above but with weathershield paint of approved brand (Berger, ICI) on Roof Parapet and External Façade including the cost of scaffolding etc.				
a	External Wall of Room at Roof Top	Sft	1,300		-
b	Parapett Wall Inner Side	Sft	346		-
c	External Building sides [Front+Side Streets+Backside)	Sft	9,429		-
<b>6</b>	<b>Fixed Glazing.</b>				
	Providing, fabrication and installation in position fixed clear glazing consisting of 8mm tempered clear glass fixed with 2" x 3" Black Anodised Aluminum Frame as shown in detail including all hardware's, neoprene gasket, rubber gasket seal / silicone sealant, fixing arrangements, etc., complete in all respect. For payment exposed Elevation area will be measured.	Sft	70		-
<b>7</b>	<b>MDF Dropped Beam</b>				
	Providing, fabricating and fixing 4"th x 6" high Mdf box beam comprasing of 1/2"th Mdf both side's of rough partal wood structure fixed on existing slab including harware, nail, glue, scaffolding, wastage, etc., complete in all respect as per drawing & as directed by the Engineer Incharge.	Sft	30		-
<b>8</b>	<b>Frosted Film</b>				
	provide and install frosted film by 3M or equivalent, using best quality adhesive as per specifications. Complete installation including cutting, placing, fixing, pasting, wastage etc. complete in all respect, as per drawings, specifications and as as directed by the Engineer Incharge.	Sft	40		-

**TransKarachi**  
**Karachi Bus Rapid Transit Red Line Project**  
**RFR for Balance Civil & MEP Works of TransKarachi Corporate Office**

**BILL OF QUANTITIES (BALANCE CIVIL WORKS)**

S.#	Description	Unit	Qty	Rate	Amount
<b>9</b>	<b>Openable Windows</b>				
	Providing, fabrication and installation in position openable window comprising of 6mm tempered clear glass fixed with 2" x 3" Black Anodised Aluminum Frame as shown in detail including all hardware's, openable fly mesh shutter, neoprene gasket, rubber gasket seal/silicone sealant, fixing arrangements complete in all respect. For payment exposed Elevation area will be measured.	Sft	32		-
<b>10</b>	<b>Porcelain Tile Dado</b>				
	Providing and fixing Porcelain Tile Dado/Cladding of approved sample on walls, with 1:4 cement sand mortar and base with approved bond of required thickness, setting the tiles with neat cement mortar, butt joints if required with approved grout & color of equivalent as per manufacturer's specifications & instructions, including curing, cleaning, hacking / chipping of existing surface for bonding where necessary, etc, complete in all respect.				
	T-14W Basic Rate: 175/Sft	SFT	375		-
<b>11</b>	<b>PVC Skirting</b>				
	Providing and fixing of approved PVC skirting of approved height including cutting, adhesive, all fixing accessories and arrangements, etc. Complete in all respect and as per drawings, details & as directed by the Engineer Incharge.	Rft	110		-
<b>B-</b>	<b>FLOORING FINISHES:</b>				
<b>12</b>	<b>Vinyl Flooring Planks. (Rubberized Flooring)</b>				
	Providing & fixing in position line & level of approved Vinyl flooring of approved thickness over CC floor complete in all respects, as per drawings, details & as directed by the Engineer.	SFT	427		-
<b>13</b>	<b>C.C Floor</b>				
	Provide and lay 3" thick 1:3:6 cement concrete floor finished of required thickness including curing, hacking of existing surface for bonding where necessary, etc, Complete in all respect as per drawings, specifications & as directed by the Engineer Incharge.	SFT	427		-
<b>14</b>	<b>Porcelain Tile Flooring.</b>				
	Providing and Laying of Porcelain tile flooring including the cutting of tile as per specified size in the drgs with 1:4 cement sand mortar base & bond of required thickness so as to achieve a minimum overall finished floor thickness of 3", setting the tiles with neat cement mortar, butt joints if required with approved waterproof grout, curing, cleaning, hacking / chipping of existing surface for bonding where necessary, etc. Complete in all respect, as per drawing and instruction of the Architect. For Payment Net tile area will be measured.	Sft	187		-
<b>C-</b>	<b>CEILING FINISH.</b>				
<b>15</b>	<b>Gypsum Suspended False-Ceiling.</b>				
	Providing and installing in position gypsum board false ceiling 12mm thick (Elephant brand, Thermec or equivalent) best quality gypsum sheet including the cost of galvanized iron adjustable clutch wire hanging system, horizontal and vertical framework of approved material, making cove/Bulkheads/light pelmet, fiber tape on joints, provision of openings for all lights fixtures, linear grills and diffusers and providing aluminum flush band for protection of edges/corners where ever required including cost of minimum 3 coats of matt enamel paint (ICI/Berger/Nippon), all hardware, wastage, cutting, lifting etc., complete in all respect as per drawing, specifications & as directed by the Engineer Incharge. (For payment horizontal surface LxB will be measured)				
<b>a</b>	Hall	Sft	427		-
<b>b</b>	Kitchen	Sft	108		-

**TransKarachi**  
**Karachi Bus Rapid Transit Red Line Project**  
**RFR for Balance Civil & MEP Works of TransKarachi Corporate Office**

**BILL OF QUANTITIES (BALANCE CIVIL WORKS)**

S.#	Description	Unit	Qty	Rate	Amount
<b>16</b>	<b>Distemper Paint.</b>				
	Provide and apply Distemper paint minimum three coats of approved quality and shade (Burger/Kansai/ICI) on RCC ceiling/beams over one coat of primer and base preparation up to required height and level, including preparing the surfaces smooth with carborandum stone, filling the depression with putty, scraping with sand paper, cleaning the surfaces etc., complete in all respects as per drawings, specifications & as directed by Engineer Incharge.	Sft	275		-
<b>E-</b>	<b>Misc. Work.</b>				
<b>17</b>	<b>Vanity in Kitchen &amp; Washroom</b>				
	Providing and fixing of vanity counter consisting of ¾" thick pre-polished Marble top surface with drop ledge, over 3"th RCC slab (Plaster finished (where required) to be constructed on site as per detail & Architect specification including the cost of reinforcement in RCC Slab structure, cutting space of wash basin, filling the joints with neat slurry, using matching colour / pigment, nail, glue, wastage, etc, complete in all respects as per drawings, specifications & as directed by the Engineer Incharge.	Sft	50.00		-
<b>18</b>	<b>Laminate Doors</b>				
	Providing, making and installing in position wooden doors, consisting of 1-1/2" thick solid core flush shutter (for flush door shutters partial wood infill framing), approved formica finish (Patex by Formite or approved equivalent) on both sides of shutter with solid oak wood lipping on edges with approved polish finish, 100mm wide black aluminium frame for door of approved sections & sample, including of approved, hardwares, hinges, lock, handle, glue, silicone sealant, wastage, lifting, cutting, fixing, etc., complete in all respect as per drawing, specifications & as directed by the Engineer Incharge. <b>(Base Price of Hardware Rs 12,000 per Door).</b> (For payment frame to frame size will be measured.)	Sft	195		-
<b>19</b>	<b>Mirror in Toilet</b>				
	Providing and Installation in position 6mm thick imported Belgium mirror with ply backing fixed on MS Frame to be fixed in existing finish wall as shown in drawings and details, including hardware's, wastage, lifting, etc., complete in all respects.	Sft	25		-
<b>20</b>	<b>Rollup Blinds (Manual Operated)</b>				
	Provide and install in position Roll-up window blinds with 3% sunscreen in white /blackout of approved sample (Thermec or approved equivalent) including wastage, lifting, etc, complete in all respect as per drawing, specifications & as directed by the Engineer Incharge. Net Blind (including top & bottom channel) area will be measured for payment.	Sft	72		-
<b>21</b>	<b>Pantry Cabinet</b>				
	Providing, making and fixing in position wooden cabinets, consisting of 1-1/2"x 1"thick partial wood structure solignum treated internal frame, with 3/4"th laminated board (Alnoor) finishes shelves, partition & 1/2" thick laminated shutter (Alnoor) with approved lipping, 3/4" thick chemically pre-polished granite resting on rough wood frame as shown in drawing as per required size, thickness & design pattern, including all hardwares, hinges, handles, lockset, wastage, cutting, lifting, etc., complete in all respect as per drawing, specifications & as directed by the Engineer Incharge. For Payment Front Elevation area will be measured with-out any depth and thickness.				
i	Base Cabinet	Sft	40		-
ii	Hanging Cabinet	Sft	60		-

**TransKarachi**  
**Karachi Bus Rapid Transit Red Line Project**  
**RFR for Balance Civil & MEP Works of TransKarachi Corporate Office**

**BILL OF QUANTITIES (BALANCE CIVIL WORKS)**

S.#	Description	Unit	Qty	Rate	Amount
<b>22</b>	<b>Precast Slab Roofing</b>				
	Providing, laying, placing in position Precast Slab Roofing with Precast Girders (I-Beams) as per site requirements including placing of plastic sheet over the slab and Laying of 1" thick PCC 1:2:4 Screeding over entire roof surface maintaining required slope and surface finish with steel trowel complete in all respects as per drawing, specificatins & as directed by the Engineer. For Payment net surface area of Slab will be measured.	Sft	624		-
<b>23</b>	<b>Fibre Glass Shed work</b>				
	Providing and installation of Fibre Glass Shed over open area comprising of the following				
	<b>a) For Dimensions: L=27' x W17', 7' x 21'</b>				
a)	Vertical Pillers of MS Iron Pipe 3"x3" (Rectangle X-Section) or 3" Dia (circular pipe) in 14 gauge with Base & Top Plates welded with pipe and including all hardware & 3 coats of synthetic enema paint at different locations as shown on drawing, complete in all respects & as directed by the Engineer Incharge.				
b)	Frame resting over the vertical pillers made of MS Iron Pipe of x-section 2"x4" in 14 gauge with all hardware & 3 coats of synthetic enema paint complete in all respects & as directed by the Engineer Incharge.				
c)	Providing, laying, placing in position over the frame & fixing of 4mm thick Fibre Glass sheet of approved brand & quality including all accessories etc. complete in all respects & as directed by the Engineer Incharge.				
d)	Complete installation & Finishing with all labour etc.	Sft	606		-
	<b>b) For Dimensions: L=16' x W=6'.6"</b>				
a)	Vertical Pillers of MS Iron Pipe 3"x3" (Rectangle X-Section) or 3" Dia (circular pipe) in 14 gauge with Base & Top Plates welded with pipe and including all hardware & 3 coats of synthetic enema paint at different locations as shown on drawing, complete in all respects & as directed by the Engineer Incharge.				
b)	Frame resting over the vertical pillers made of MS Iron Pipe of x-section 2"x4" in 14 gauge with all hardware & 3 coats of synthetic enema paint complete in all respects & as directed by the Engineer Incharge.				
c)	Providing, laying, placing in position over the frame & fixing of 4mm thick Fibre Glass sheet of approved brand & quality including all accessories etc. complete in all respects & as directed by the Engineer Incharge.				
d)	Complete installation & Finishing with all labour etc.	SFT	104		-
<b>F-</b>	<b>Roof Treatment</b>				
<b>25</b>	<b>Waterproofing</b>				
	Providing, placing & overlaping Hy-Grip Bitumenous-Water Proofing Membrane 4 mm thick over entire roof area with surface preparation, primer coat, overlaping, straightening, cutting & fixing with gas heater complete in all respects and as directed by the Engineer Incharge.				
	Room with Toilets	Sft	550		
	Guard Room with Toilet & Store	Sft	195		
	<b>TOTAL COST OF BALANCE CIVIL WORK AT ROOF TOP FLOOR:</b>				-

TransKarachi  
Karachi Bus Rapid Transit Red Line Project  
RFR for Balance Civil & MEP Works of TransKarachi Corporate Office

**BILL OF QUANTITIES (BALANCE CIVIL WORKS)**

S.#	Description	Unit	Qty	Rate	Amount
<b>BALANCE CIVIL WORK AT FIRST FLOOR</b>					
<b>A</b>	<b>WALL FINISHES:</b>				
<b>A-1</b>	<b>Plastic Emulsion Paint.</b>				
	Providing and applying final coat of Plastic Emulsion paint of approved quality and shade (Berger, ICI or equivalent) on walls & other surfaces after surface/base preparation upto any height and level including preparing the surfaces smooth by putty filling, scraping with sand paper, cleaning the surface (where required), complete in all respects, as per specifications, drawings, and as directed by the Engineer incharge.	Sft	7,840		-
<b>B</b>	<b>CEILING FINISH.</b>				
<b>B-1</b>	<b>Distemper Paint</b>				
	Providing and applying Distemper Paint minimum single/final coat of approved quality and shade (Burger/Kansai/ICI) on RCC ceiling/beams after surface/base preparation upto any height and level including preparing the surfaces smooth with carborandum stone, filling the depression with putty, scraping with sand paper, cleaning the surfaces etc. complete in all respects, as per specifications, drawings, and as directed by the Engineer incharge.	Sft	2,450		-
	<b>TOTAL COST OF BALANCE CIVIL WORK AT FIRST FLOOR:</b>				-
	<b>TOTAL COST OF BALANCE CIVIL WORKS:</b>				-

**TransKarachi**  
**Karachi Bus Rapid Transit Red Line Project**  
**RFR for Balance Civil & MEP Works of TransKarachi Corporate Office**

**BILL OF QUANTITIES (ADDITIONAL CIVIL WORKS)**

S.#	Description	Unit	Qty	Rate	Amount
<b>ADDITIONAL CIVIL WORKS AT GROUND FLOOR</b>					
<b>i)</b>	<b>Demolition</b>				
	Dismantling of existing Tiles/Marble or other flooring and Sub floor including removal/disposal up to any lead of debris complete as per site conditions and as directed by the Engineer	JOB	1		-
<b>ii)</b>	<b>Ceramics Tile Flooring.</b>				
	Laying Floor of ¾" thick Glazed Ceramic Tiles of approved quality, size & colour set white cement 1:2 over ¾" thick cement mortar 1:2 including finishing, polishing etc. complete in all respect as shown on drawings or as directed by the Engineer.	SFT	240		-
<b>iii)</b>	<b>C.C Floor</b>				
	Provide and lay 3" thick (avg.) 1:3:6 cement concrete floor finished of required thickness including curing, hacking of existing surface for bonding where necessary, etc, complete in all respect as shown on drawings or as directed by the Engineer.	Sft	240		-
<b>ADDITIONAL CIVIL WORKS AT FIRST FLOOR</b>					
<b>1</b>	<b>MDF Stud Partition.</b>				
	Providing, making and fixing of 4" thick MDF Board low height partition comprising of 1/2" thick MDF boards (both side) over rough wood framing structure fixing of frame on floor including all fixing accessories and arrangements, scaffolding, making openings, cutting of electric switch board etc., as shown in drawing & details, complete in all respect and as instructed by the Architect. (This job will be coordinated with electrical works. (For Payment one side exposed Partition area will be measured).	Sft	200		-
<b>2</b>	<b>Soft Board over MDF Partition</b>				
	Provide and install soft board over MDF partition including the cost of approved quality fabric, pasted over soft board, including cutting, lifting, wastage etc complete in all respect, as per drawings, specifications and as instructed by Architect	Sft	110		-
<b>ADDITIONAL CIVIL WORKS AT ROOF TOP FLOOR</b>					
<b>1</b>	<b>DEMOLITION</b>				
	Cutting, chiseling, dismantling, removing & disposal up to any lead of following existing elements including block masonry, stud partition, doors, floor tiles, false ceiling, light fixtures, plumbing fixtures pipe and fittings, etc. Complete as per site conditions and and as directed by the Engineer.				
a	Masonry Walls	SFT	126		-
b	All Tiles/Marbles or other flooring	SFT	492		-
c	False Ceiling & Roof with Gutters	SFT	492		-
<b>2</b>	<b>MDF Stud Partition.</b>				
	Providing, making and fixing of 4" thick MDF board low height partition 7ft x 7ft comprising of 1/2" thick MDF boards (both side) over rough wood framing structure fixing of frame on floor including all fixing accessories and arrangements, scaffolding, making openings, cutting of electric switch board etc., as shown in drawing & details, complete in all respect and as instructed by the Architect. (This job will be coordinated with electrical works. (For Payment one side exposed Partition area will be measured.)	Sft	100		-
<b>TOTAL COST OF ADDITIONAL CIVIL WORKS:</b>					-



**TransKarachi**  
**Karachi Bus Rapid Transit Red Line Project**  
**RFR for Balance Civil & MEP Works of TransKarachi Corporate Office**  
**BILL OF QUANTITIES**  
**SUMMARY OF COST (MEP WORKS)**

S. #.	Description	Amount (Rs)	Remarks
<b>ELECTRICAL &amp; ALLIED WORKS ( LV &amp; ELV WORKS)</b>			
A	WIRING / WIRING ACCESSORIES ETC.	-	
B	SWITCHES, SOCKETS, OUTLET & ACCESSORIES	-	
C	LIGHT FIXTURES & FANS	-	
D	MAIN. SUB-MAIN CABLES, CONDUIT & CABLE TRAY	-	
E	SWITCH BOARDS AND DISTRIBUTION BOARDS	-	
F	UN-INTRRUPTED POWER SUPPLY		Already Completed
G	EARTHING SYSTEM		Already Completed
H	WIRING & ACCESSORIES FOR DATA / VOICE SYSTEM	-	
I	WIRING & ACCESSORIES FOR FIRE ALARM SYSTEM	-	
J	WIRING & ACCESSORIES FOR CCTV SYSTEM	-	
<b>AC WORKS</b>			
1	A/C POWER AND PIPING WORKS	-	
	<b>SUB-TOTAL ELECTRICAL &amp; A/C WORKS:</b>	-	
<b>PLUMBING WORKS</b>			
1	WATER SUPPLY	-	
2	ISOLATION VALVE		Already Completed
3	WATER TANK CONNECTION		Already Completed
4	DRAINAGE	-	
5	DRAINAGE SPECIALITIES	-	
6	GRATINGS, MANHOLES AND GULLY TRAPS	-	
7	EXTERNAL CONNECTIONS		Already Completed
8	PLUMBING FIXTURES	-	
	<b>SUB-TOTAL PLUMBING WORKS:</b>	-	
	<b>TOTAL COST OF MEP WORKS</b>	-	
	<b>SST @ 8% / As per Government applicable Taxes</b>	-	
	<b>FINAL COST OF MEP WORKS:</b>	-	

**TransKarachi**  
**Karachi Bus Rapid Transit Red Line Project**  
**RFR for Balance Civil & MEP Works of TransKarachi Corporate Office**  
**BILL OF QUANTITIES**  
**MEP - Remaining works (ELECTRICAL & ALLIED WORKS)**

<b>Note:</b> Contractor must visit the site and must notify in written if any additional works required for complete operation of site (Basement / Ground / 1st / Roof / External) and not covered in below items. Same must be quoted separately and attached with the quote complete in all respects. Once quote is received, no quantity / financial variation to be provided. (Applicable for Electrical / AC & Plumbing Works)									
Item No.	Description	Unit	Qty	Supply		Installation		Composite	
				Rate	Amount	Rate	Amount	Rate	Amount
<b>ELECTRICAL &amp; ALLIED WORKS ( LV &amp; ELV WORKS)</b>									
<b>SECTION - A : WIRING / WIRING ACCESSORIES ETC MAKE : PAKISTAN CABLES</b>									
1	a	Wiring of light circuit from DB to switch, and switch to switch or switch to first light point directly controlled from DB with single core PVC insulated 2x1C-2.5 Sq.mm + 1x1C-2.5 (ECC) in 25mm dia pvc conduit.	Nos.	4		-		-	-
	b	Wiring from switch to first light point with 2 x 1C - 1.5 sq.mm + 1 x 1C - 1.5 sq.mm (ECC) wires in 25 mm dia PVC conduit complete in all respect.	Nos.	50		-		-	-
	c	Same as above item b but from point to point.	Nos.	25		-		-	-
	d	Wiring of power circuit from DB to first power socket with 2 x 1C - 2.5 sq.mm + 1x 1C - 2.5 Sq.mm PVC cables in 20 mm dia PVC conduit as shown in drawings complete in all respect.	Nos.	6		-		-	-
	e	same as above but outlet to outlet (Back to Back and Point to point upto 4' shall be considered as one).	Nos.	25		-		-	-
	f	Wiring of Single phase A.C power circuit from DB to A.C with 2 x 1C - 4 sq.mm + 1x 1C - 4 Sq.mm PVC wires in 25 mm dia PVC conduit as shown in drawings complete in all respect.	Nos.	4		-		-	-
<b>Sub-Total A:</b>						-		-	-
<b>SECTION - B: SWITCHES, SOCKETS, OUTLET &amp; ACCESSORIES MAKE : ORANGE ELECTRIC / CLIPSAL</b>									
1		Following Switches etc. with M.S back box complete in all respect. Make Orange or Equivalent. (Note: Weather-proof required for external areas)							
	a	1 - Gang. (1-way)	Nos.	5		-		-	-
	b	2 - Gang. (1-way)	Nos.	11		-		-	-
	c	3 - Gang. (1-way)	Nos.	5		-		-	-
	d	5 - Gang. (1-way)	Nos.	2		-		-	-
2		Following Sockets with all accessories complete in all respects							
	a	13 A International Switch socket outlet	Nos.	55		-		-	-
	b	Flat pin switch socket outlet simplex	Nos.	20		-		-	-
	c	13 A International Switch socket outlet (WP)	Nos.	10		-		-	-
	d	Ceiling/Wall Mounted Spur Outlet for CCTV	Nos.	5		-		-	-
3		Following type Data outlet with all accessories complete in all respects							
	a	Telephone / Data outlet Simplex RJ-45 including I.O's with face plate, back box and all installation accessories complete in all respects.	Nos.	8		-		-	-
	b	Telephone / Data outlet Duplex RJ-45 including I.O's with face plate, back box and all installation accessories complete in all respects.	Nos.	30		-		-	-
	c	TV outlet with RG-6 Coaxial cable and all installation accessories complete in all respects.	Nos.	2		-		-	-
<b>Sub-Total B:</b>						-		-	-

**TransKarachi**  
**Karachi Bus Rapid Transit Red Line Project**  
**RFR for Balance Civil & MEP Works of TransKarachi Corporate Office**  
**BILL OF QUANTITIES**  
**MEP - Remaining works (ELECTRICAL & ALLIED WORKS)**

<b>Note:</b>	Contractor must visit the site and must notify in written if any additional works required for complete operation of site (Basement / Ground / 1st / Roof / External) and not covered in below items. Same must be quoted seperately and attached with the quote complete in all respects. Once quote is received, no quantity / financial variation to be provided. (Applicable for Electrical / AC & Plumbing Works)								
Item No.	Description	Unit	Qty	Supply		Installation		Composite	
				Rate	Amount	Rate	Amount	Rate	Amount
<b>SECTION- C : LIGHT FIXTURES &amp; FANS</b>									
1	Supply, Installation, Testing & Commissioning of the following Lights including all hanging, mounting and installation arrangements, rods, fixtures etc. required for successful completion of scope of works as per GEP and as per detail shown on drawing incoordination with all trades and complete in all respect.								
a	8W LED RECESSED LIGHT - 2500K	Nos.	38		-		-		-
b	15W LED Pandalant light	Nos.	2		-		-		-
c	LED wall light	Nos.	12		-		-		-
d	LED Bulk Head light - 10 Watts	Nos.	12		-		-		-
e	Flood Light for external lighting - 100 Watts	Nos.	4		-		-		-
f	Exhaust Fan 6"Dia (in w/rooms) with Glass & Frame	Nos.	5		-		-		-
	Exhaust Fan 6"Dia (in w/rooms) without Glass & Frame	Nos.	7		-		-		-
g	Wall Bracket Fan	Nos.	3		-		-		-
<b>Sub-Total C:</b>					-		-		-
<b>SECTION - D : POWER CABLES / CONDUITS &amp; CABLE TRAY</b>									
1	Supply, Installation of following sizes of cables including terminations of both ends complete with all accessories i.e lugs, glands etc as per directed by consultant / client.								
a	5x1C - 10 Sq.mm as ECC Cu/PVC cable From MDB to DB-External/Roof in 38mm dia PVC conduit Class-D.	Rm	16		-		-		-
2	Following sizes of PVC conduits complete in all respect								
a	32 mm dia.	Rm	Rate Only						-
b	25 mm dia.	Rm	Rate Only						-
c	20 mm dia.	Rm	Rate Only						-
3	Following sizes of Cable Trays: Solid/Perforated powder coated cable tray including all hanging/supporting accessories, complete in all respects, as per site requirement and satisfaction of client.								
a	300x100 mm	Rm	2		-		-		-
b	450x75 mm	Rm	3		-		-		-
<b>Sub-Total D:</b>					-		-		-
<b>SECTION - E : DISTRIBUTION BOARDS</b>									
1	Installation, testing and commissioning of existing DB-ROOF including addition of following breakers including termination and mounting arrangements, etc, complete in all respects as per satisfaction of the client/consultant . a) 40 Amp TP MCB b) 16 Amp SP MCB c) 20 Amp SP MCB	Job	1		-		-		-
<b>Sub-Total E:</b>					-		-		-

**TransKarachi**  
**Karachi Bus Rapid Transit Red Line Project**  
**RFR for Balance Civil & MEP Works of TransKarachi Corporate Office**  
**BILL OF QUANTITIES**  
**MEP - Remaining works (ELECTRICAL & ALLIED WORKS)**

<b>Note:</b>	Contractor must visit the site and must notify in written if any additional works required for complete operation of site (Basement / Ground / 1st / Roof / External) and not covered in below items. Same must be quoted separately and attached with the quote complete in all respects. Once quote is received, no quantity / financial variation to be provided. (Applicable for Electrical / AC & Plumbing Works)								
Item No.	Description	Unit	Qty	Supply		Installation		Composite	
				Rate	Amount	Rate	Amount	Rate	Amount
<b>SECTION - H: WIRING &amp; ACCESSORIES FOR DATA/VOICE</b>									
1	Supply, installation, Testing and Commissioning of following complete in all respects as per drawings / specs, including Fluke Test Reports.								
a	Wiring of CAT-6 cables for Data/Voice System in 25mm Dia PVC Conduit from each data/voice point to network switch/patch panel in already existing server room at 1st Floor (upto 4 Nos. CAT-6 cables in 1 conduit). <b>Make: 3M / Schneider</b>	Points (Nos.)	28		-		-		-
	<b>Sub-Total I:</b>				-		-		-
<b>SECTION - I: WIRING &amp; ACCESSORIES FOR FIRE ALARM SYSTEM</b>									
1	Supply, installation, Testing and Commissioning of following including flexible conduits from points to device complete in all respects as per drawings / specs. <b>Make: Honeywell</b>								
a	Wiring of complete Fire Alarm System with 2C 1.5 Sq.mm PVC/PVC (Fire Resistance Cable- 2 hours fire rating) in 25 mm dia PVC Conduit including fire components	Nos.	15		-		-		-
b	Smoke Detectors	Nos.	50		-		-		-
c	Heat Detectors	Nos.	1		-		-		-
d	Manual Call Point (Break Glass)	Nos.	2		-		-		-
e	Sounder - Flasher	Nos.	9		-		-		-
f	Fire Alarm Control Panel - 4 Zone Coventional	Nos.	1		-		-		-
	<b>Sub-Total I:</b>				-		-		-
<b>SECTION - J: SUPPLY, INSTALLATION, TESTING &amp; COMMISSIONING - WIRING &amp; ACCESSORIES FOR CCTV SYSTEM</b>									
1	Supply, installation, Testing and Commissioning of following including flexible conduits from points to device complete in all respects as per drawings / specs.								
a	Wiring of CCTV cameras with Cat-6 cable in 25 mm dia PVC conduit from switch to each camera as per drawings and specifications complete in all respects including all accessories.	Nos.	7		-		-		-
b	2 MP camera Dome/Bullet Type with verifocal lens 2.5 mm - 8 mm. <b>Make. Hik-vision</b>	Nos.	7		-		-		-
	<b>Sub-Total J:</b>				-		-		-
<b>TOTAL COST FOR ELECTRICAL &amp; ALLIED WORKS:</b>									-

**TransKarachi**  
**Karachi Bus Rapid Transit Red Line Project**  
**RFR for Balance Civil & MEP Works of TransKarachi Corporate Office**  
**BILL OF QUANTITIES**  
**MEP - BILL OF QUANTITIES (ROOF TOP AIR CONDITIONING WORKS)**

**A/C UNITS:**

Supply , Installation, testing and Commissioning of Conventional Split Type Air Conditioning Units, including unloading, Lifting, Placing and Supply , installation , testing and comissioning of the supporting arrangements for outdoor units in the external area with proper coating of paints to prevent rusting due to enviroment conditions, Fixing as shown on the drawings / as per site including Gas charging (if required), complete in all respects

**COPPER AND DRAIN PIPING:**

Supply , Installation , testing and comissioning of copper and drain piping incllduing supporting arrangements and race way as per drawings or as per site complete in all respects.

Sr. No.	DESCRIPTION	Unit	Qty	Supplying		Installation		Composite	
				Rate	Amount	Rate	Amount	Rate	Amount
	<b>WALL MOUNTED UNIT</b> (Conventional Type Units) - Including Control wiring of indoor to outdoor.								
1	WM - 1.0 TR	Nos.	2		0		0	0	0
2	WM - 1.5 TR	Nos.	2		0		0	0	0
<b>Total Amount (inclusive of all applicable Taxes):</b>									

**TransKarachi**  
**Karachi Bus Rapid Transit Red Line Project**  
**RFR for Balance Civil & MEP Works of TransKarachi Corporate Office**  
**BILL OF QUANTITIES**

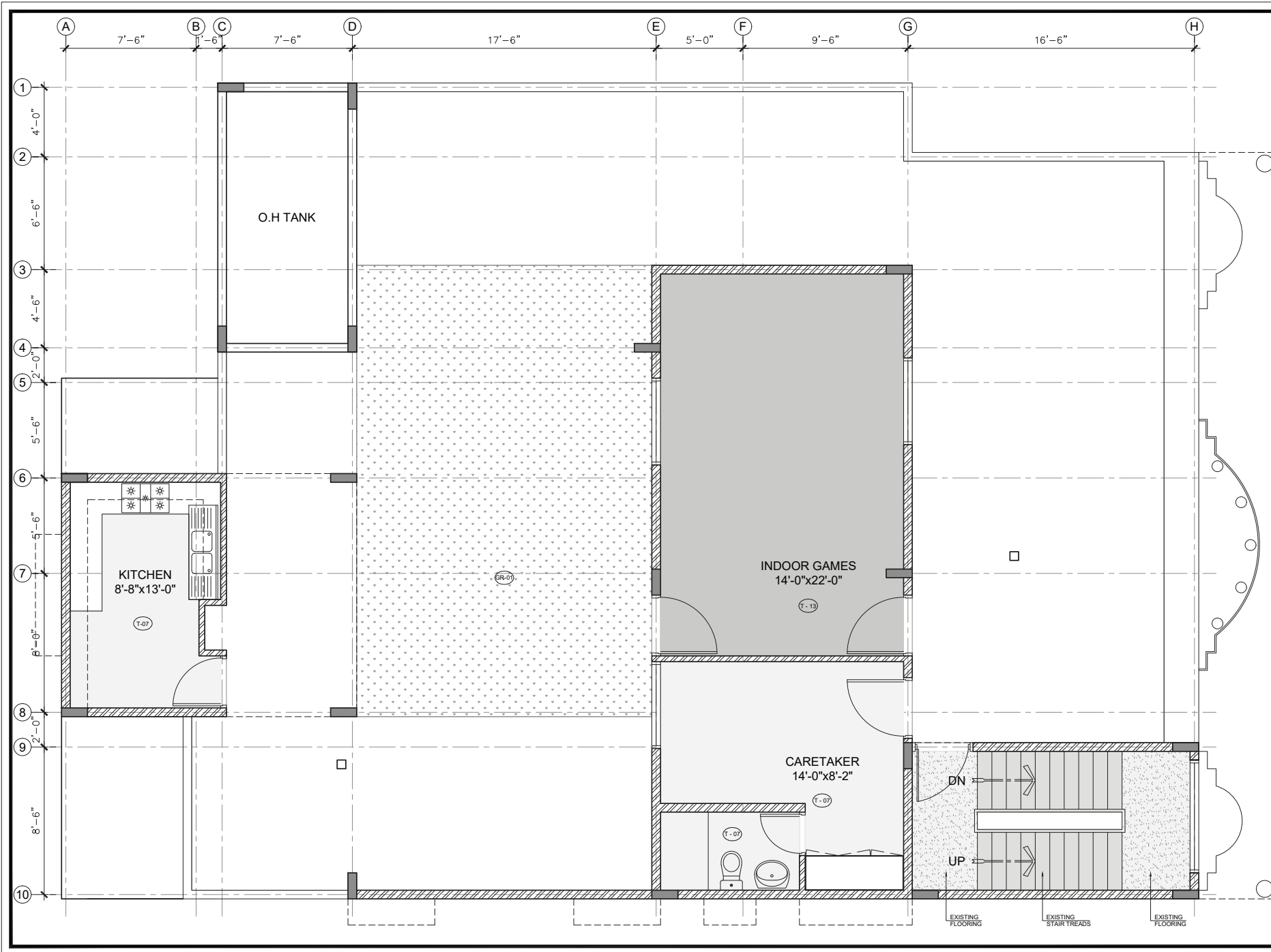
**MEP - Remaining works (PLUMBING)**

Item No.	Description	Unit	QTY	Rate (Rs.)	Amount (Rs)
<b>PLUMBING WORKS</b>					
<b>1</b>	<b>SECTION - A: WATER SUPPLY: Cold Water Supply Piping</b>				
	Supply, installation, testing and Commissioning of uPVC plumbing pipe, including pipe supports, U clamps, cutting, filling, testing/ commissioning and all accessories as indicated on the drawing, as per specifications or consultant / client representative approval.				
a	¾" dia	Rm	12		-
b	1" dia	Rm	12		-
c	1¼" dia	Rm	5		-
d	1½" dia	Rm	10		-
	<b>Sub-Total A:</b>				-
<b>4</b>	<b>SECTION - D: DRAINAGE</b>				
	<b>Soil, Waste and Vent Pipes</b> Providing and fixing, uPVC pipes and fittings as per instruction of client / consultant for above ground installations for Soil, Waste & Vent pipes with Kite mark on pipes and fittings including cleanout plug, clamps, hanger collars, supports, specials (bend, tees, Y-tee etc.) as indicated on the drawing, as per specifications and Engineers approval.				
a	1-1/2" dia	Rm	10		-
b	2-1/2" dia	Rm	20		-
c	3" dia	Rm	20		-
d	4" dia	Rm	35		-
	<b>Sub-Total D:</b>				-
<b>5</b>	<b>SECTION-E: DRAINAGE SPECIALITIES</b>				
a	Providing and fixing of cleanout plug of the approved self cleaning design with S.Steel grating as specified by the architect, as indicated on the drawing, as per specifications, architectural finishing schedule and Engineers approval.	Nos.	5		-
b	Providing and fixing UPVC cowl for vent pipe of the following dia including all accessories complete in all respects.				
i	2" dia	Nos.	1		-
ii	3" dia	Nos.	1		-
iii	4" dia	Nos.	3		-
	<b>Sub-Total E:</b>				-
<b>6</b>	<b>SECTION-F: GRATINGS, MANHOLES AND GULLY TRAPS</b>				
a	Construction of 450mm x 450mm (18" x 18") gully trap with 150mm P- trap and 300mm x 300mm (12" x 12")cover (min Weight = 55 kg) as specified and shown on the drawing, as per specifications and Engineers approval.	Nos.	1		-
	<b>Sub-Total F:</b>				-

**TransKarachi**  
**Karachi Bus Rapid Transit Red Line Project**  
**RFR for Balance Civil & MEP Works of TransKarachi Corporate Office**  
**BILL OF QUANTITIES**

**MEP - Remaining works (PLUMBING)**

Item No.	Description	Unit	QTY	Rate (Rs.)	Amount (Rs)
<b>8</b>	<b>SECTION-H: PLUMBING FIXTURES:</b>				
a	Providing and fixing of S.Steel Single compartment kitchen/Pantry Sink with mixer, waste trap, Stop cocks with flexible pipes, Flexible drain pipe as per site, specifications and engineer's approval - Local Make	Nos.	3		-
b	Indian WC with Flush Tank Complete in all respects incl all accessories	Nos.	2		-
c	European WC with Flush Tank (Coupled Set) Complete in all respects incl all accessories	Nos.	1		-
	<b>Providing and fixing bath toilet accessories as under:</b>				-
e	Toilet Paper Holder	Nos.	7		-
f	Muslim shower	Nos.	5		-
g	Robe Hooks	Nos.	7		-
h	Towel Railing	Nos.	3		-
	<b>Sub-Total H:</b>				-
	<b>TOTAL COST OF PLUMBING WORKS:</b>				-

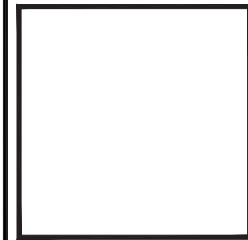


WALL LEGEND		
DESCRIPTION	SYMBOL	
EXISTING WALL FULL HEIGHT	[Symbol]	
PROPOSED WALL FULL HEIGHT	[Symbol]	
EXISTING R.C.C. BEAM	[Symbol]	

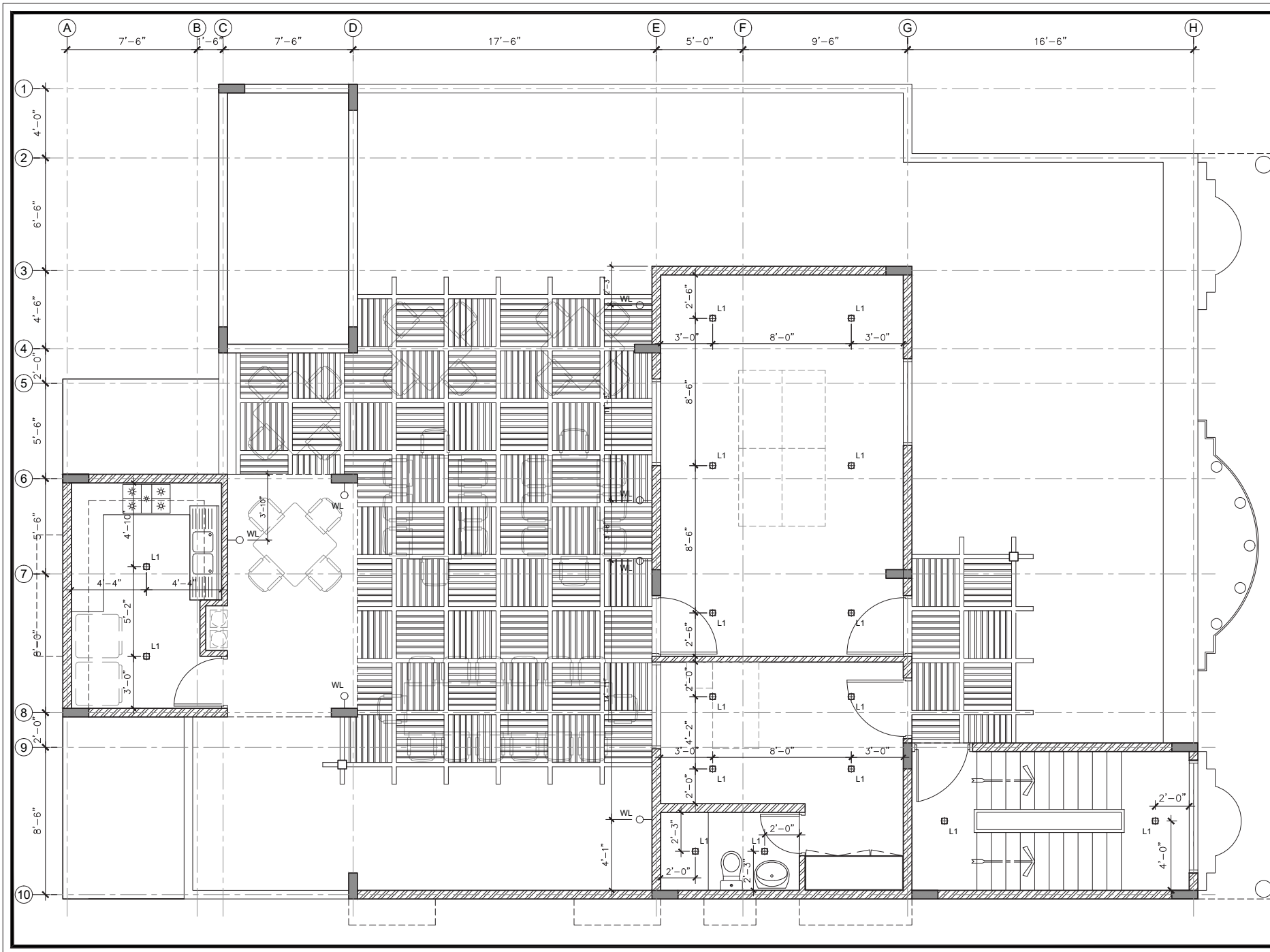
FLOORING LEGEND		
CODE	DESCRIPTION	SYMBOL
GR-01	ARTIFICIAL GRASS	[Symbol]
T-01	PORCELAIN TILE	[Symbol]
T-02	PORCELAIN TILE	[Symbol]
T-03	PORCELAIN TILE	[Symbol]
T-05	12" x 24" PORCELAIN TILE	[Symbol]
T-07	PORCELAIN TILE	[Symbol]
T-09V	VINYL FLOORING	[Symbol]
T-10V	VINYL FLOORING	[Symbol]
T-11V	VINYL FLOORING	[Symbol]
T-12V	VINYL FLOORING	[Symbol]
T-13	PORCELAIN TILE	[Symbol]

DATE	REV.	REMARKS



PROJECT :	
<b>TRANS KARACHI</b>	
DRAWING TITLE :	
FLOORING PLAN ROOF FLOOR	
STAMP :	
CONSTRUCTION DRAWING	
DRAWING NO. : ID-1.02C	
PROJECT CODE :	DRAWN BY :
98 / 2020	-----
DATE :	SCALE :
29/01/2021	3/16" = 1'-0" @ A3





WALL LEGEND		
DESCRIPTION	SYMBOL	
EXISTING WALL FULL HEIGHT	[Symbol]	
PROPOSED WALL FULL HEIGHT	[Symbol]	
EXISTING R.C.C. BEAM	[Symbol]	

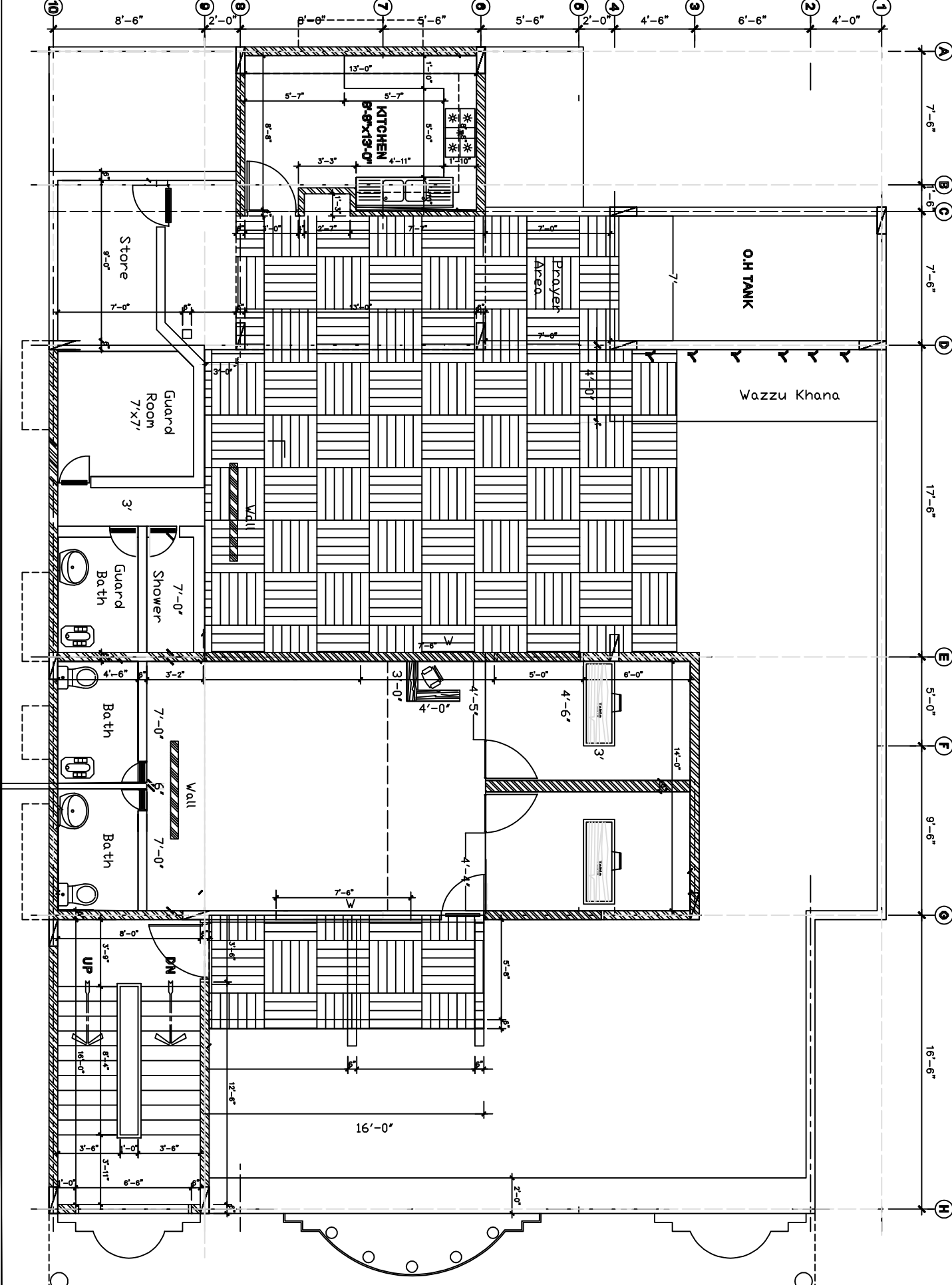
CEILING LEGEND		
CODE	DESCRIPTION	SYMBOL
C-01	ORK VENEER CEILING	[Symbol]
C-02	EXISTING R.C.C SLAB PAINT FINISH	[Symbol]

ELECTRICAL LEGEND		
CODE	DESCRIPTION	SYMBOL
L1	SURFACE MOUNTED LIGHT	[Symbol]
L2	CEILING RECESSED LIGHT	[Symbol]
PL1	PENDANT LIGHT	[Symbol]
PL2	HANGING LED TUBE LIGHT	[Symbol]
WL	WALL LIGHT	[Symbol]
AC	A/C UNIT	[Symbol]

DATE	REV.	REMARKS

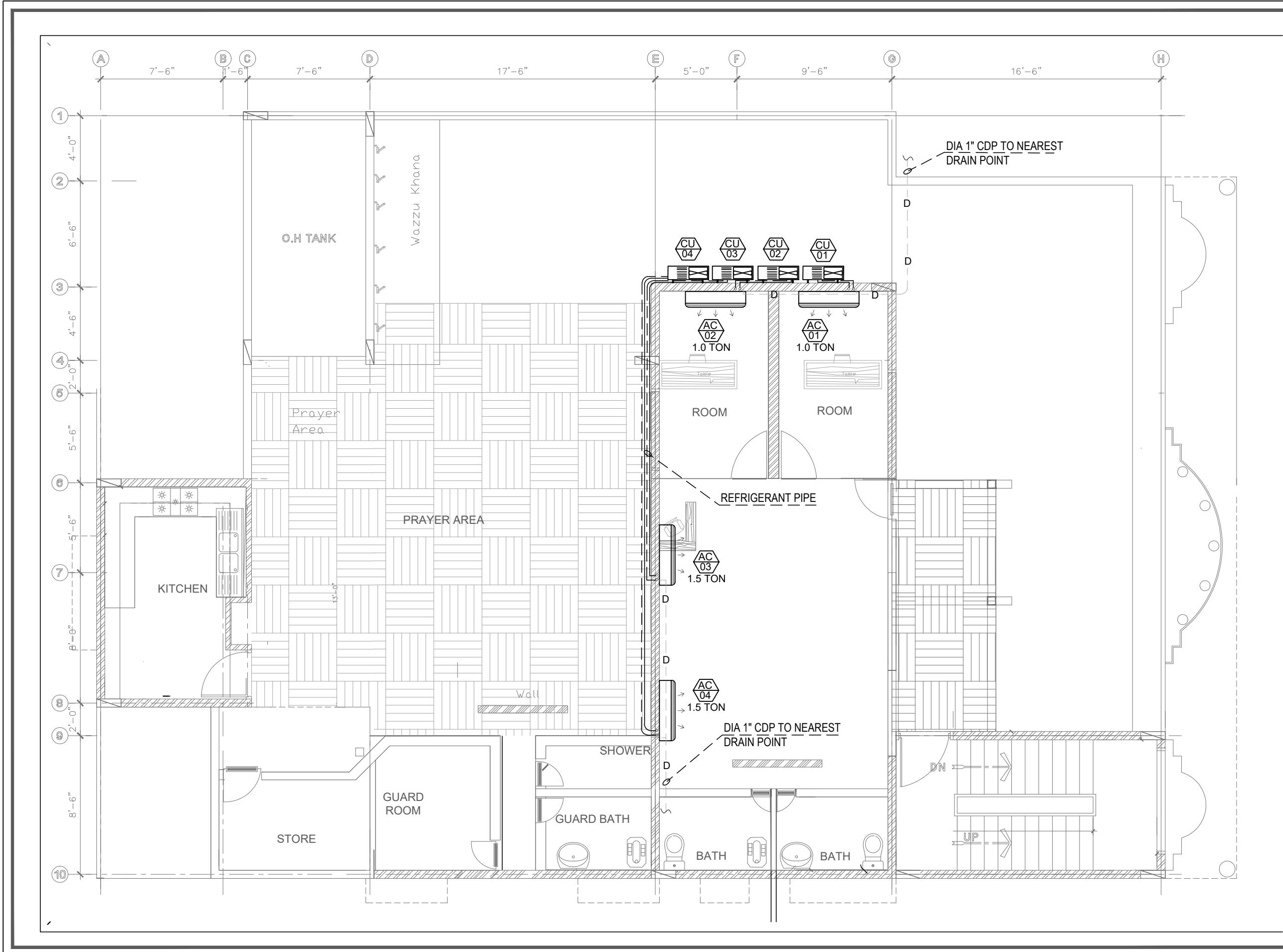
PROJECT :	
<b>TRANS KARACHI</b>	
DRAWING TITLE :	
REFLECTED CEILING PLAN ROOF FLOOR	
STAMP :	
CONSTRUCTION DRAWING	
DRAWING NO. : ID-1,04C	
PROJECT CODE :	DRAWN BY :
98 / 2020	_____
DATE :	SCALE :
29/01/2021	3/16" = 1'-0" @ A3



WALL USINGS	DESCRIPTION	THICKNESS
	EXTERIOR WALL, MASONRY	12"
	INTERIOR WALL, MASONRY	8"
	WAZZU WALL, MASONRY	12"
	MASONRY	8"
	Dasso Bamboo Pergola	

DATE	REV.	REMARKS

PROJECT: <b>TRANS KARACHI</b>	DRAWING TITLE: <b>DIMENSION PLAN          ROOF FLOOR</b>
DRAWING NO.: <b>ID-1-01C</b>	DRAWING BY: <b> </b>
PROJECT CODE: <b>01/2020</b>	SCALE: <b>3/8" = 1'-0" @ 1/8"</b>
DATE: <b>28/01/2021</b>	DRAWING NO.: <b> </b>
<b>CONSTRUCTION DRAWING</b>	



AC LEGEND			
S.No.	SYMBOL	DESCRIPTION	MOUNTING
1		SPLIT AC UNIT - 1 / 1.5 / 2 TON	WALL
2		CONDENSING UNIT	WALL
3		REFRIGERANT PIPE (1/4" Dia. Protection & Wrapping With Spacing)	
4		DRAIN PIPE (UPVC) 1/4" Dia	

COPPER PIPING CHART		
S.No.	TON	COPPER PIPING
1	1.0 TON	1/2" & 3/8"
2	1.5 TON	3/4" & 1/2"
3	2 TON	1/2" & 3/8"

**TENDER DRAWING**  
DATED: JUNE 2022

DATE	REV.	REMARKS
09/06/22	00	TENDER DRAWING

CONSULTANT:

**A. S. CONSULTANTS**  
CONSULTING ENGINEERS (ELECTRICAL & MECHANICAL)  
REGD. OFFICE: P.E.C.A.S. System-4, Daudpura, F-7/4, Islamabad - 75400  
Phone: 011-3483938-3483939 Fax: 011-3483939  
E-mail: info@asconsultants.com asconsultants@gmail.com

ARCHITECT:

**ARCHITELIER**  
ARCHITECTURE ■ INTERIOR

PROJECT:

**TRANS KARACHI**

DRAWING TITLE:

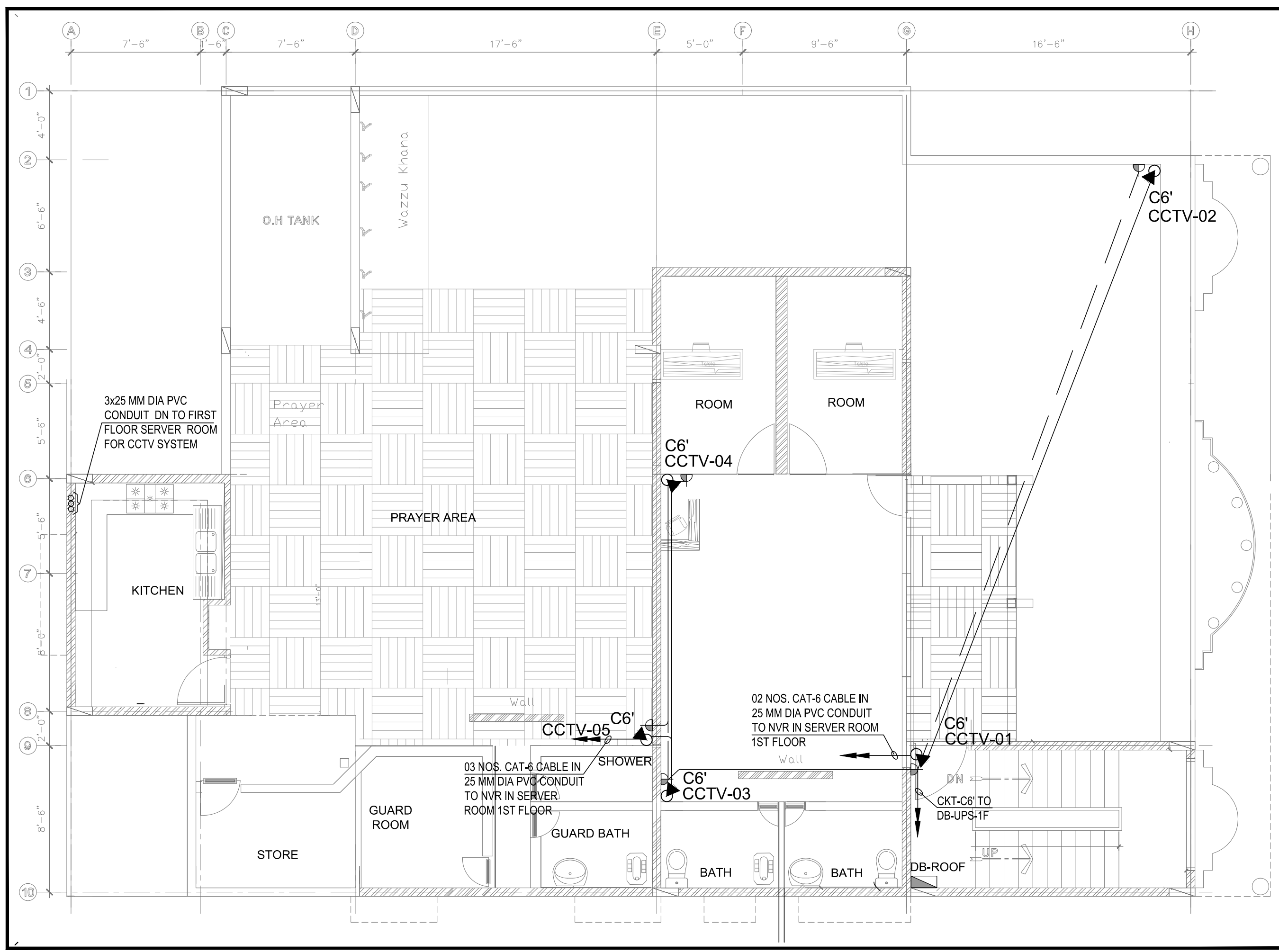
**AC LAYOUT ROOF**

STAMP:

TENDER DRAWING

DRAWING NO: **AC-04**

PROJECT CODE : 98 / 2020	DRAWN BY : M.Z
DATE: 09-06-2022	SCALE: 1/8"=1'-0"



**LEGEND:**

SYMBOL	DESCRIPTION	MOUNTING
	CCTV CAMERA	CEILING / WALL
	SPUR OUTLET	CEILING / WALL

**TENDER DRAWING**  
DATED: JUNE 2022

DATE	REV.	REMARKS
090622	00	TENDER DRAWING

CONSULTANT:

**A.S. CONSULTANTS**  
CONSULTING ENGINEERS (ELECTRICAL & MECHANICAL)  
187-A, Block-7, P.E.C.S.E. Shalimar-Quaiana, Karachi - 75400  
Phone: 021-3438030-3433789 # e: www.asconsultants.com  
E m a i l: info@asconsultants.com asconsultants@gmail.com

ARCHITECT:

**ARCHITELIER**  
ARCHITECTURE ■ INTERIOR

PROJECT : **TRANS KARACHI**

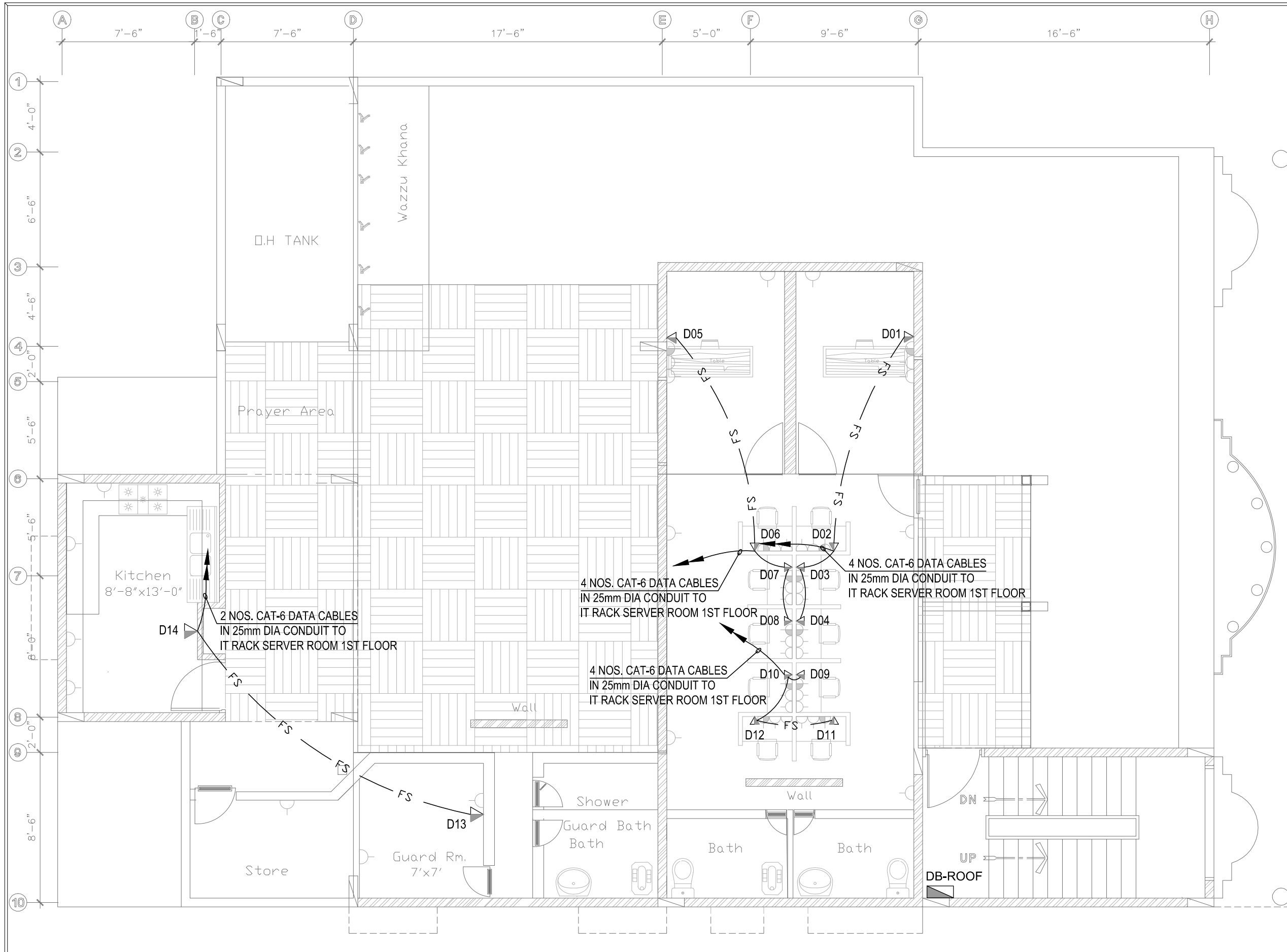
DRAWING TITLE : **CCTV LAYOUT ROOF**

STAMP : **TENDER DRAWING**

DRAWING NO : **CCTV-04**

PROJECT CODE : **98 / 2020** DRAWN BY : **M.Z**

DATE : **09-06-2022** SCALE : **1/8"=1'-0"**



POWER LEGEND:			
S.NO.	SYMBOL	DESCRIPTION	MOUNTING
1		13' CAT-6 DATA CABLE	□□□□
2		13' CAT-6 DATA CABLE	□□□□
3		13' CAT-6 DATA CABLE	□□□□
4		13' CAT-6 DATA CABLE	□□□□

MOUNTING HEIGHT / TYPE OF LIGHT FIXTURES ARE FOR REFERENCE ONLY. TO BE CONFIRMED BY ARCHITECT / CLIENT AT THE TIME OF EXECUTION OF WORK.

**ISSUE FOR CONSTRUCTION**  
DATED: JUNE 2022

DATE	REV.	REMARKS
090622	00	TENDER DRAWING

CONSULTANT:

**A. S. CONSULTANTS**  
CONSULTING ENGINEERS (ELECTRICAL & MECHANICAL) / P.E.C.A. REG. NO. C-202-20  
187-A, Block-2, P.E.C.A. Shahr-e-Qadim, Karachi - 75400  
Phone: 021-3428920-3428789 \* \* \* www.asconsultants.com  
E-mail: info@asconsultants.com

ARCHITECT:

**ARCHITELIER**  
ARCHITECTURE ■ INTERIOR

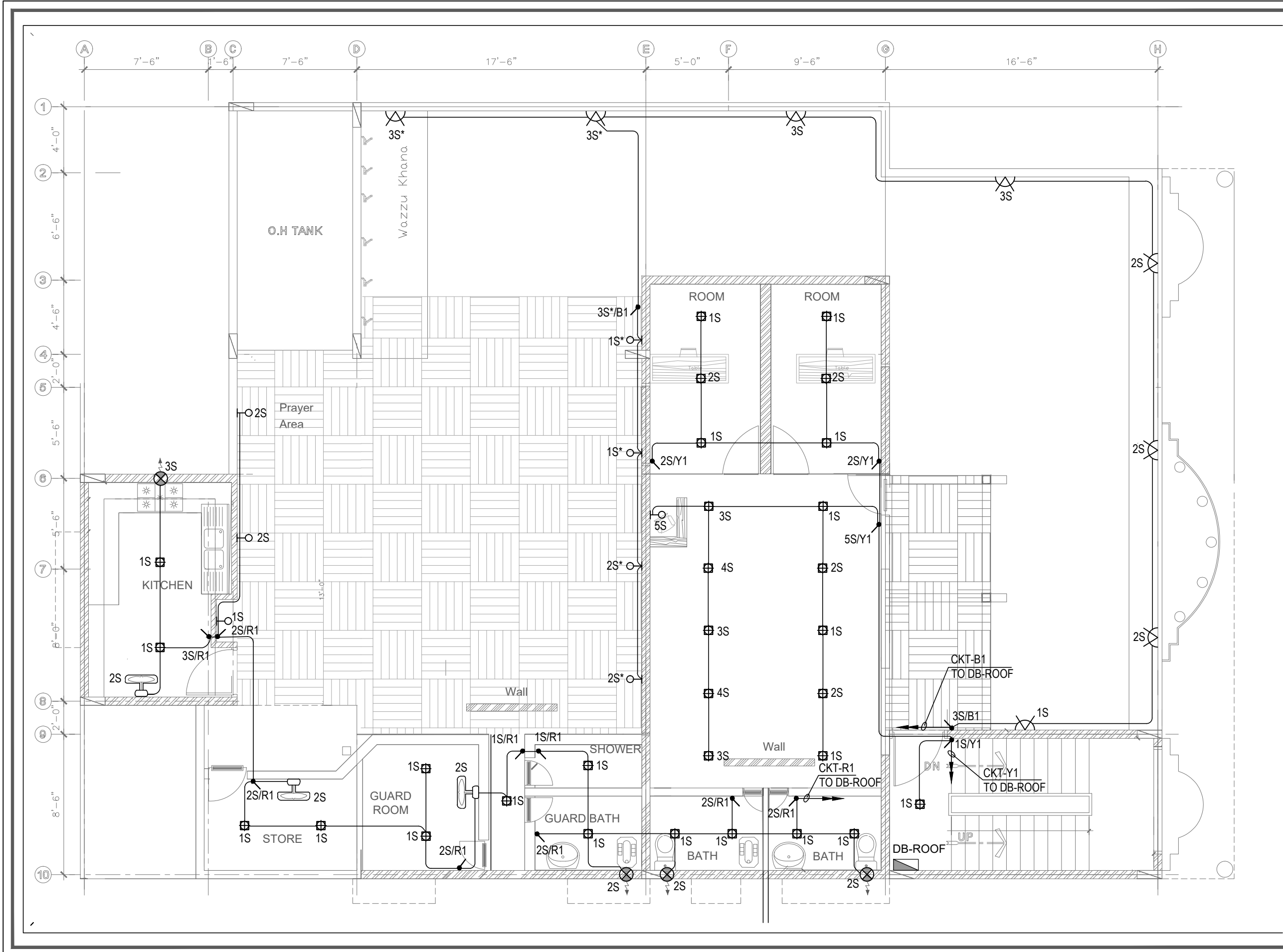
PROJECT: **TRANS KARACHI**

DRAWING TITLE: **DATA & VOICE LAYOUT ROOF**

STAMP: **TENDER DRAWING**

DRAWING NO.: **DV-04**

PROJECT CODE: 98 / 2020	DRAWN BY: M.A
DATE: 09-06-2022	SCALE: 3/16"=1'-0"



LIGHTING LEGEND			
S.NO	SYMBOL	DESCRIPTION	MOUNTING
1	☐	LED DOWN LIGHT FIXTURE	CEILING
2	⊖	WALL LIGHT FIXTURE	WALL
3	⊗	BULK HEAD LIGHT	WALL
4	⊗	EXHAUST FAN	WALL
5	⊗	WALL BRACKET FAN	WALL
6	⊗	1GA 220V SINGLE WAY SWITCH	WALL

MOUNTING HEIGHT / TYPE OF LIGHT FIXTURES ARE FOR REFERENCE ONLY. TO BE CONFIRMED BY ARCHITECT / CLIENT AT THE TIME OF EXECUTION OF WORK.

<b>TENDER DRAWING</b> DATED: JUNE 2022		
DATE	REV.	REMARKS
090622	00	TENDER DRAWING

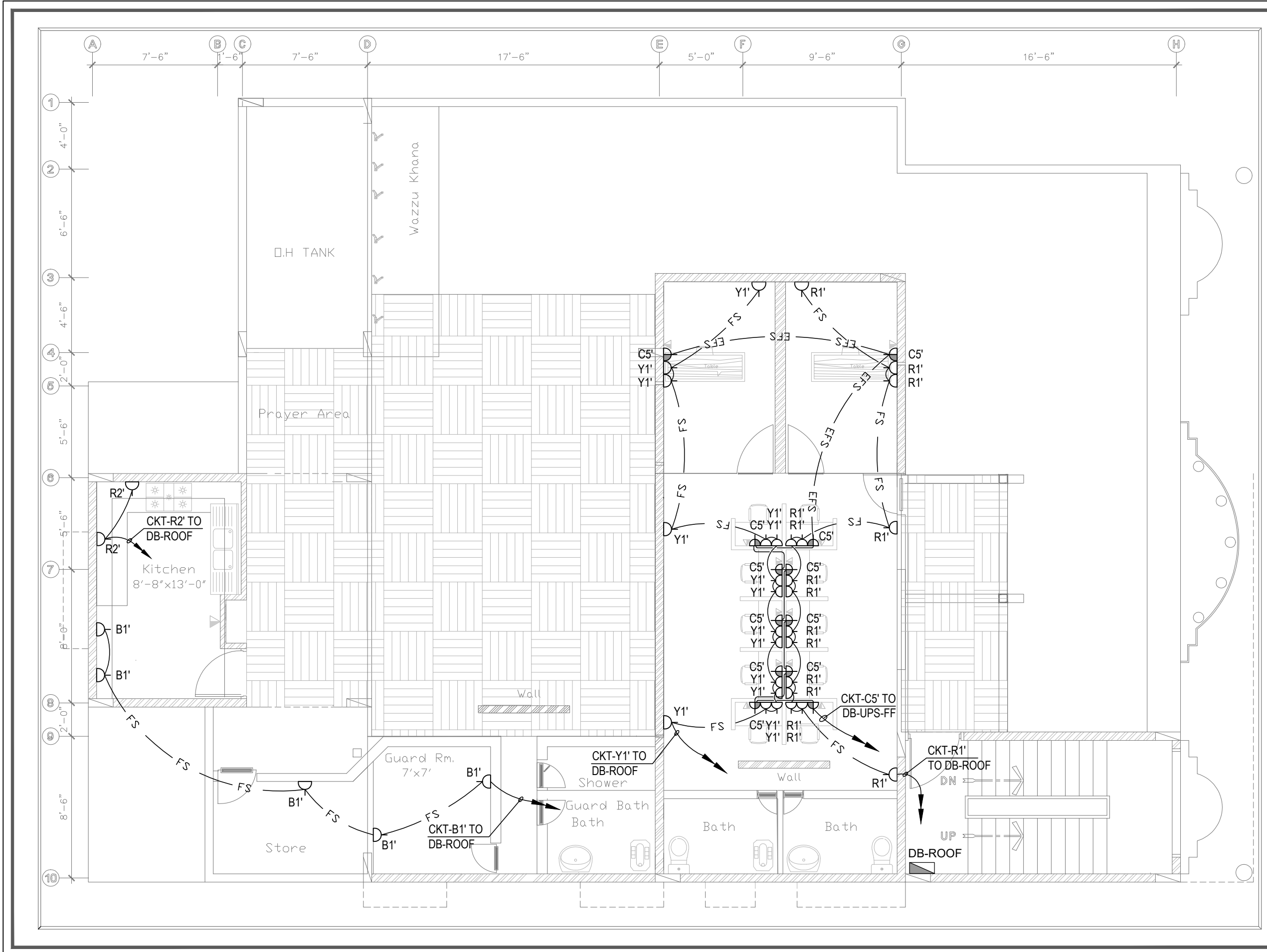
CONSULTANT:

**A. S. CONSULTANTS**  
CONSULTING ENGINEERS (ELECTRICAL & MECHANICAL)  
REGD. OFFICE: P.O. BOX 104, SHARADA, KARACHI - 75400  
PHONE: 021-3483030-3483031, 3483032, 3483033, 3483034, 3483035  
E.M.A.I.S. info@asconsultants.com, asconsultants@gmail.com

ARCHITECT:

**ARCHITELIER**  
ARCHITECTURE ■ INTERIOR

PROJECT:	
<b>TRANS KARACHI</b>	
DRAWING TITLE:	
<b>LIGHTING LAYOUT ROOF</b>	
STAMP:	
TENDER DRAWING	
DRAWING NO: EL-04	
PROJECT CODE: 98 / 2020	DRAWN BY: M.Z
DATE: 09-06-2022	SCALE: 1/8"=1'-0"



POWER LEGEND:			
S.NO.	SYMBOL	DESCRIPTION	MOUNTING
1		13A SIMPLEX INTERNATIONAL POWER OUTLET	WALL
2		13A SIMPLEX FLAT PIN UPS POWER OUTLET	WALL
3		HAND DRYER	WALL
4		DISTRIBUTION BOARD	WALL

MOUNTING HEIGHT / TYPE OF OUTLETS ARE FOR REFERENCE ONLY. TO BE CONFIRMED BY ARCHITECT / CLIENT AT THE TIME OF EXECUTION OF WORK.

**ISSUE FOR CONSTRUCTION**  
**DATED: JUNE 2022**

DATE	REV.	REMARKS
09/06/22	00	TENDER DRAWING

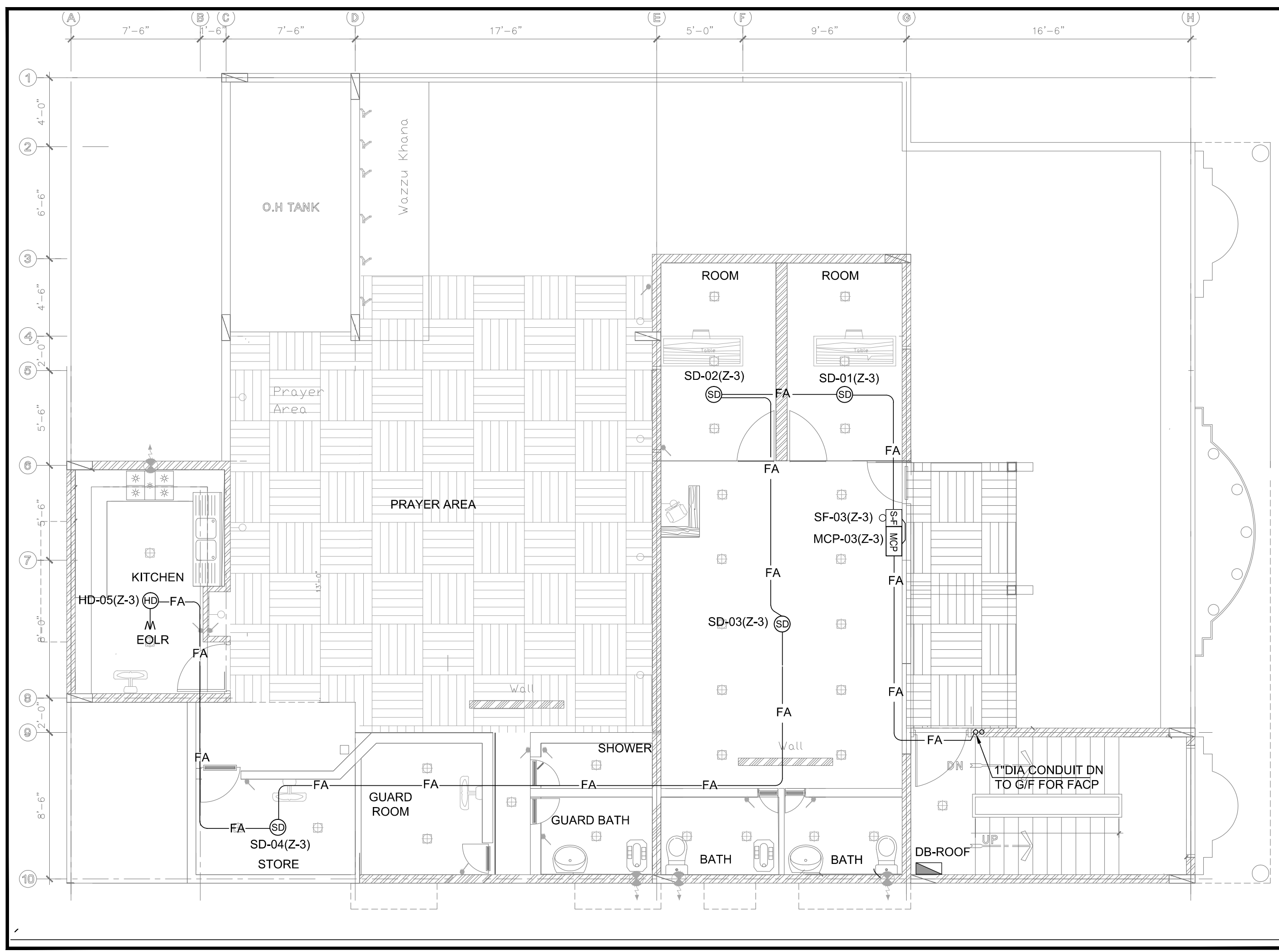
CONSULTANT:

**A. S. CONSULTANTS**  
 CONSULTING ENGINEERS (ELECTRICAL & MECHANICAL)  
 REGD. OFFICE: P.O. Box 104, Station Road, Karachi - 75200  
 Phone: 021-3483030-3483031 Fax: 021-3483032  
 E-mail: info@asconsultants.com or asconsultants@gmail.com

ARCHITECT:

**ARCHITELIER**  
 ARCHITECTURE ■ INTERIOR

PROJECT:	
<b>TRANS KARACHI</b>	
DRAWING TITLE:	
<b>POWER LAYOUT ROOF</b>	
STAMP:	
<b>TENDER DRAWING</b>	
DRAWING NO:	
<b>EP-04</b>	
PROJECT CODE:	DRAWN BY:
98 / 2020	M.A
DATE:	SCALE:
09-06-2022	3/16"=1'-0"



LEGEND:

S.NO	SYMBOL	DESCRIPTION	MOUNTING
1	⊙	SMOKE DETECTOR	□□□□
2	⊙	HEAT DETECTOR	□□□□
3	⊙	SOUNDER - FLASHER	□□□□
4	⊙	MANUAL CALL POINT	□□□□
	□	FIRE ALARM CONTROL PANEL	□□□□

MOUNTING HEIGHT / TYPE OF LIGHT FIXTURES ARE FOR REFERENCE ONLY, TO BE CONFIRMED BY ARCHITECT / CLIENT AT THE TIME OF EXECUTION OF WORK.

**TENDER DRAWING**  
**DATED: JUNE 2022**

DATE	REV.	REMARKS
090622	00	TENDER DRAWING

CONSULTANT:

**A.S. CONSULTANTS**  
 CONSULTING ENGINEERS (ELECTRICAL & MECHANICAL)  
 REGD. OFFICE: 107-A, Block-7, P.E.C.S.E., Shalimar-e-Qadim, Karachi - 75400  
 Phone: 021-3438030-3433789 # www.asconsultants.com  
 E-mail: info@asconsultants.com, as.consultants@gmail.com

ARCHITECT:

**ARCHITELIER**  
 ARCHITECTURE ■ INTERIOR

PROJECT :  
**TRANS KARACHI**

DRAWING TITLE :  
**FIRE ALARM LAYOUT ROOF**

STAMP :  
**TENDER DRAWING**

DRAWING NO :  
**EL-04**

PROJECT CODE :  
 98 / 2020

DATE :  
 09-06-2022

DRAWN BY :  
 M.Z

SCALE :  
 1/8"=1'-0"





PROJECT: 47279-002, KARACHI BRT RED LINE PROJECT  
GOVERNMENT OF SINDH

## **MINUTES OF PRE-BID MEETING**

(Held on 16<sup>th</sup> June 2022)

**For**

**RFQ to carry out the Balance Civil & MEP Works of TransKarachi  
Corporate Office**

**Bid Ref # KBRT-Works-Office Renov-02/2022**

**June 2022**

**PART – 1: QUERIES AND REPLIES**

The following answers to the questions raised by the Bidders shall be considered as additional clarifications/ Addendum to RFQ issued for the subject procurement, and shall form a part of the Contract of successful Bidder.

Sr #	Query	Answers/Remarks/Notes
<b>A.</b>	<b>Civil Works</b>	
1.	Waterproofing is required over the top of roof at Roof-Top Floor.	It is included and BOQ is updated accordingly. Please refer Civil Work BOQ Item # F-25
<b>B.</b>	<b>MEP Works</b>	
1.	The number of ACs shown in Drawing are: Two of 01 Ton & other Two of 1.5 Ton; whereas in the BOQ, all the Four (04) ACs are given of 01 Ton. Please clarify.	1) As the wiring for 01 Ton or 1.5 Ton AC will be the same, the Contractor has to provide points/ connections for four (04) ACs. 2) Only one new AC of 01 Ton in one Cabin will be provided & fixed by the Contractor. 3) 2 <sup>nd</sup> AC of 01 Ton is already available with TK and the Contractor only needs to fix the same. 4) Two ACs of 1.5 Ton are also available with TK and the Contractor only needs to fix the same. Please refer MEP BOQ-Roof-Top Air Conditioning Works Item # 1 (a) & (b)
2.	<u>Fire Alarm system:</u> 4 zone conventional Fire Alarm Panel is proposed. Make is not identified.	<b>Make: Honeywell</b> (Updated in the BOQ of MEP Works)
3.	<u>CCTV cameras at roof:</u> Make is not identified.	<b>Make: HIKVision</b> (Updated in the BOQ of MEP Works)
4.	External lights need to be provided at the entrance.	Item added & Updated in the BOQ of MEP Works. Please refer MEP BOQ Item # C-1(e)
5	<u>Addition of breakers in Roof DB:</u> Modification required in existing DB.	Circuit Breakers are to be added in the existing Roof DB (already kept) for AC & Power circuits. BOQ item updated/Added accordingly. Please refer MEP BOQ Item # E-1
6.	Cable tray to be extended for covering exposed electrical conduits (outside kitchen wall - GF)	BOQ item updated/Added accordingly. Please refer MEP BOQ Item # D-3(a) & (b)

**PART-2: BID SUBMISSION**

All the Bidders are advised to:

- Study the issued RFQ Documents carefully especially Terms & Conditions of Draft Contract Agreement before preparing their Quotations.
- Submit all the required documents as indicated in *Section-4 [Preparation of Quotations]* of RFQ Document along with their Quotations so that your proposal can be saved from being non-responsive.

----- ALL OTHER TERMS & CONDITIONS OF RFQ & CONTRACT WILL REMAIN UNCHANGED -----